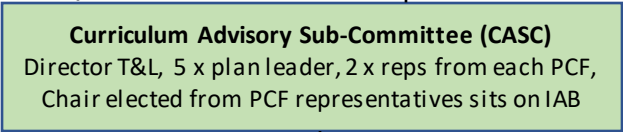
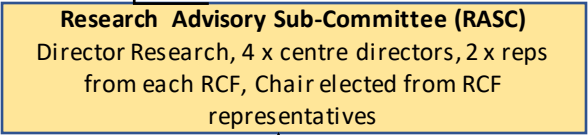
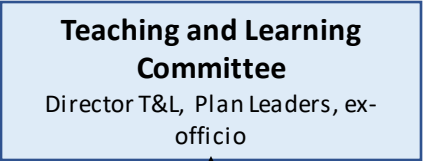
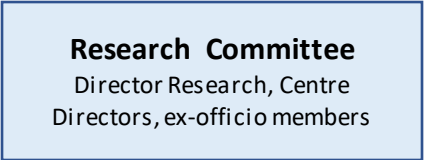
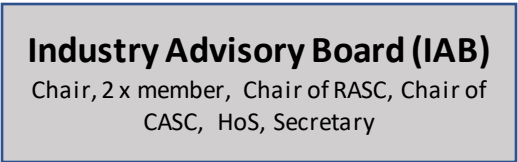
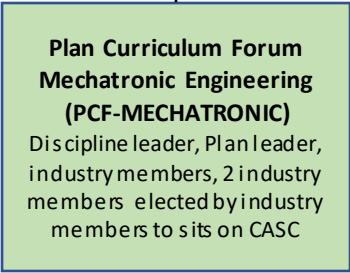
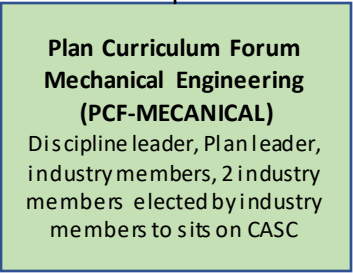


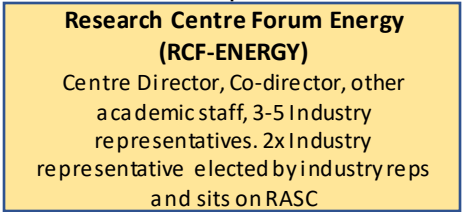
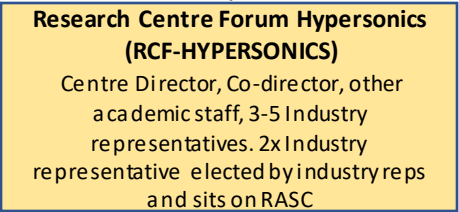
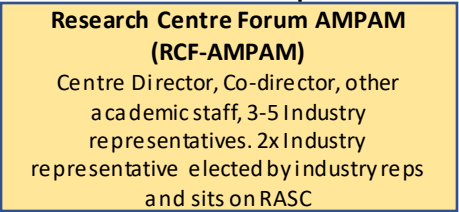
Industry members elect chair of RASC who sits on IAB



RCFs discuss Centre opportunities
Each elects two members to sit on the RASC



PCFs discuss plan specific curriculum matters. Each elects two members to sit on the CASC



Industry members elect chair of CASC who sits on IAB

Provides advice to T&L Committee through Director and plan leaders

Provides advice to Research Committee
Through Director of Research
Centre directors