

Hardware set-up (FM41 Rig – IFD7 Interface – PC)

IFD7 Interfaces

(back)



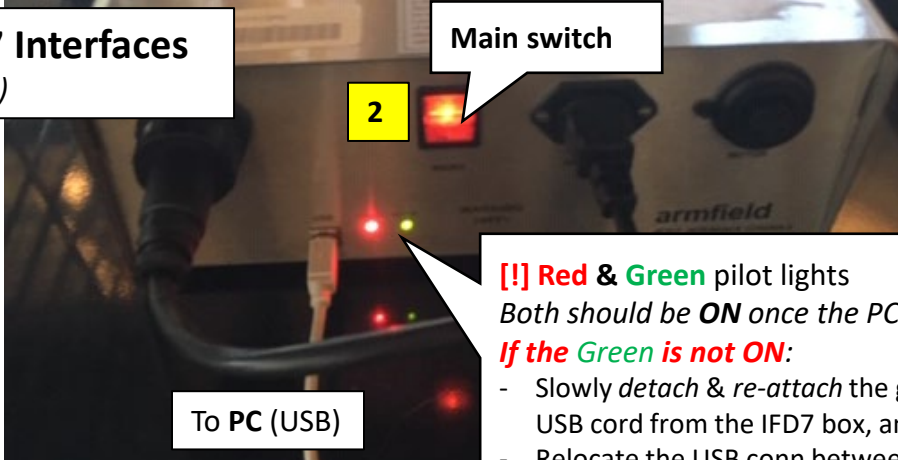
[!] Unit information
AQF 24 Rev.2

[!] Safety switch
Make sure it's position is **UP**

To AC Power

IFD7 Interfaces

(front)



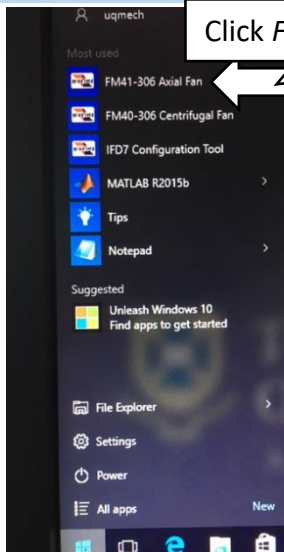
Main switch

To PC (USB)

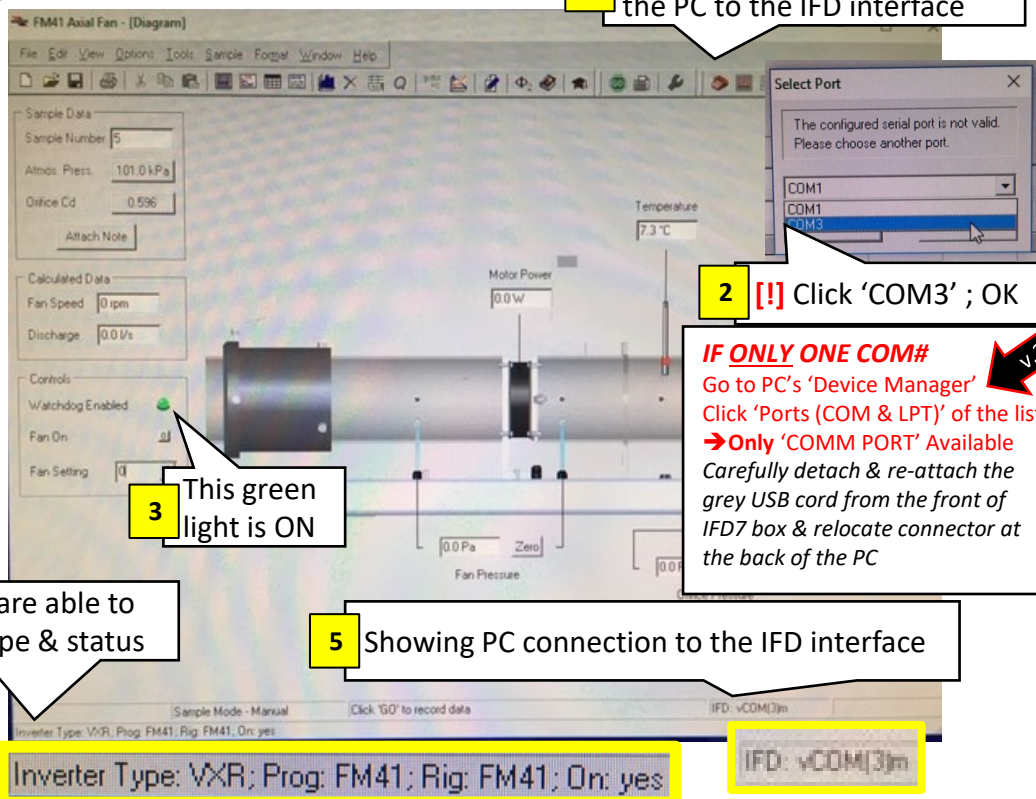
[!] **Red & Green** pilot lights
Both should be **ON** once the PC is ON
If the Green is not ON:

- Slowly detach & re-attach the grey USB cord from the IFD7 box, and...
- Relocate the USB conn between COM ports on the back of the PC

Software set up (Armfield FM41-306)



Click FM41-306 Axial Fan to open the software



1 Click the red phone connect the PC to the IFD interface

2 [!] Click 'COM3' ; OK

IF ONLY ONE COM#
Go to PC's 'Device Manager'
Click 'Ports (COM & LPT)' of the list
→ **Only 'COMM PORT' Available**
Carefully detach & re-attach the grey USB cord from the front of IFD7 box & relocate connector at the back of the PC

3 This green light is ON

4 Make sure the software able to recognise the rig's type & status

5 Showing PC connection to the IFD interface

Inverter Type: VXR; Prog: FM41; Rig: FM41; On: yes

IFD: vCOM(3)m

All set.... 😊